

For more information



For full timetables and online information please visit www.localinkerry.ie
Or visit our Facebook page:
Local Link Kerry



Contact us at: **066 71 47002**
or: **1890 528 528**



Ask your driver or other staff member for assistance

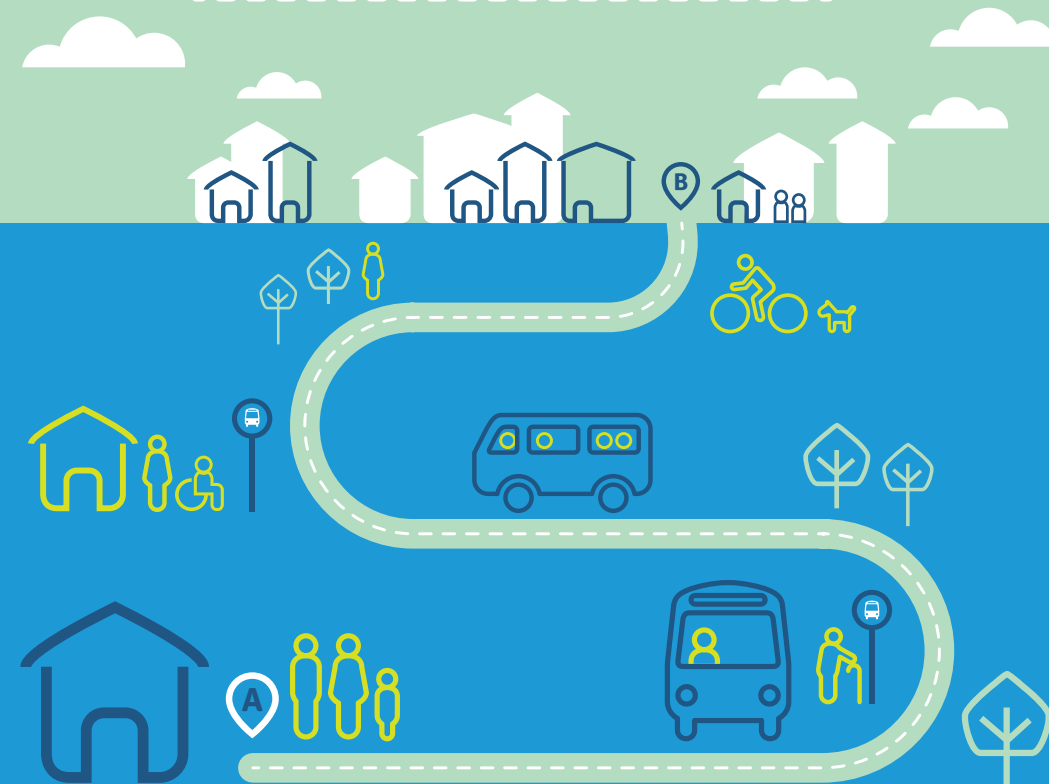


Local Link Kerry
Sliabh Luachra Cultural Centre
Scartaglin
Co. Kerry



local link

Kerry



Local Link

the new Name for Rural Transport



LOCAL LINK KERRY

Local Link Kerry is the trading name of Kerry Community Transport CLG.

Local Link Kerry is one of 17 Transport Co-ordination Units nationally that operate under the National Transport Authority to co-ordinate and deliver Public Bus Services in Rural areas.

Local Link Kerry provides **Safe, Secure and Reliable Bus Transport Services** in Co Kerry.

LOCAL LINK KERRY SERVICES

Local Link Kerry manage and co-ordinate the delivery of a combination of scheduled Public & Community Transport Services in County Kerry. The company also co-ordinate transport services for a range of Agencies and Organisations in the County.

Many services operate semi flexible routes and can deviate up to 2 miles to pick passengers up at their own doors.

All Local Link Kerry Bus Services are delivered by contracted bus operators. Local Link Kerry have a positive working relationship with operators and their drivers and view this relationship as an integral part of our business. LLK value their commitment and professionalism.

In 2016 Local Link Kerry services recorded over **133,000 passenger trips**

Local Link Kerry:

- co-ordinate the delivery of Public Transport services in County Kerry which respond to local needs - e.g. Daily or weekly service to access the local village or town
- manage over 150 Bus Services on a weekly basis.
- services operate door to door pick up of passengers where possible
- operate a Countywide Call Centre for Passenger Bookings
- services are provided by Contracted Bus Operators
- have a database of 200 vehicles (8 seats to 58 seats) and 200 Drivers & Passenger Assistants
- co-ordinate Training for Drivers and Passenger Assistants

TRANSPORT CO-ORDINATION UNIT

As the Transport Coordination Unit for Co Kerry, Local Link Kerry manage and co-ordinate a range of services on behalf of other Agencies/ Organisation e.g. HSE, Kerry County Council, Kerry Diocesan Youth Services, Day Care Centres, Rural Men Initiative, Active Retired Networks, Community After School Facilities, Community Hospital etc..

Local Link Kerry:

- work with Agencies to support and promote Integrated Transport
- tender Transport services under National Guidelines
- are Piloting a Volunteer Social Car Initiative in the County

UNRESOLVED TRANSPORT NEEDS

Local Link Kerry work with Communities, Agencies and the Local Authority in identifying unresolved transport needs in Co. Kerry and making proposals to the NTA for additional services. If you can identify the need community / public transport, please contact Local Link Kerry.

PASSENGER

Local Link Kerry provide a **Safe, Secure Reliable Bus Services** in County Kerry. Many passengers become members by completing a membership which can be completed over the phone. For higher frequency services (where door to door pick up is not required) this is not a requirement.

CALL CENTRE AND PASSENGER BOOKINGS

All services are coordinated centrally through the Countywide Call Centre based in Local Link Kerry offices in Scartaglin. Local Link Kerry have been operating for over 15 years and have an excellent reputation and extensive knowledge of the local areas, communities, passengers and the services and this ensures that Local Link Kerry continues to provide a high quality professional service.